



## **Bike Maryland 15<sup>th</sup> Annual Bicycle Symposium Presenter List** **February 22, 2012 – 9 a.m. to 4:00 p.m.**

### **9 a.m. 1<sup>st</sup> Presentation**

(This list is not in the order of day of event presentations)



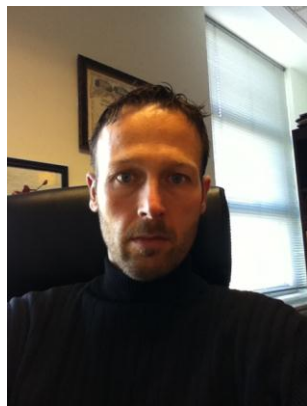
**Alex Obriecht, Bike Maryland Board President, [emailmeao@yahoo.com](mailto:emailmeao@yahoo.com).**

Alex began his bicycle business right after graduation from college, in 1978. His business has continued to grow through the years and it now includes six Race Pace locations as well as Bella Bikes, the first women's bicycle store in the U.S. Alex enjoys mountain and road biking, as well as multi-week self-supported tours around the globe. His wife and three adult children are all cyclists. His interests are: the economic impact of the retail bicycle trade, successful and unique ways to integrate the bicycle into the transportation system, and how sophisticated planning and implementation of the bicycle travel network in Maryland yields a healthier, fitter population, a region which will attract more active residents, a tourist draw for those outside the area, and a network of commuter routes resulting in benefits to all involved.



**Carol Silldorff, Executive Director, Bike Maryland, [Carol@bikemd.org](mailto:Carol@bikemd.org).**

Carol Silldorff was appointed to the position of Executive Director in 2008. She has a graduate degree in Public Administration with a specialization in Environmental Management. She passionately works to promote bicycling, increase safety, improve conditions and provide a voice for all bicyclists in Maryland. Carol has worked on numerous legislative campaigns resulting in many pro-cycling laws. She partners with leaders, individuals, clubs, non-profit organizations, corporations, and city and county agencies throughout Maryland to increase the number of bicyclists and increase cyclist safety. Carol has been appointed to a number of state, city and county bicycle related committees. During Carol's career she has worked on a variety of environmental sustainability issues for non-profit organizations, federal, state and local government agencies and both small and fortune 500 businesses. Carol has been an active bicyclist for many years (a bike commuter, recreational rider, bicycle racer including completing team RAAM, a mountain biker and scenic trail enthusiast).



**Gregory I Slater, Director, Office of Planning and Preliminary Engineering, SHA, [gslater@sha.state.md.us](mailto:gslater@sha.state.md.us). Presentation: Funding Opportunities in Maryland**

Greg is a 1997 Graduate of Towson University in Geography and Environmental Planning, a 2007 Graduate of the University Of Maryland National Leadership Institute, a 2009 Graduate of the MDOT; State Highway Administrations Advanced Leadership Program; and a register GISP (GIS Professional). Before being appointed to SHA's Planning Director, Greg served as the Chief of the Design Technical Services Division. As Planning Director, Greg takes an approach of data driven decision support and establishing relationships to develop sustainable solutions for Maryland. Because of this approach, Greg has Maryland focused on sustainability, climate change, linking of planning and safety, GIS based asset data warehousing for a comprehensive asset management approach, and multimodal planning solutions that focus on community and

industry input, The data driven approach is designed to build fully context sensitive solutions by gathering input from all involved and thinking big picture with the solutions.



**Chris Eatough, BikeArlington Program Manager, Capital Bikeshare Management and Marketing, [chris.eatough@bikearlington.com](mailto:chris.eatough@bikearlington.com).**

**Presentation: Keys to Success and Experiences of Capital Bikeshare**

Chris was a professional cyclist for 12 years and is a six time world champion in endurance mountain bike racing. In 2009 a career shift brought him to BikeArlington, where Chris is managing the initiatives that promote bike culture and contribute to making Arlington one of the most bicycle friendly communities in the nation. These programs include cycling education and encouragement classes, bicycle friendly business outreach and marketing bicycles as a valid form of transportation. Recently, Chris' scope of work at

BikeArlington has broadened to include the management and marketing of Capital Bikeshare.



**Heather Strassberger, AICP, Bicycle, Pedestrian & Human Services Transportation Planner, Baltimore Metropolitan Council, [hstrassberger@baltometro.org](mailto:hstrassberger@baltometro.org).**

**Presentation: Regional transportation planning: opportunities for funding**

Heather Strassberger is the Bicycle, Pedestrian, and Human Services Transportation Planner at Baltimore Metropolitan Council. She is a member of the American Institute of Certified Planners and the Association of Pedestrian and Bicycle Professionals and holds a Master of City and Regional Planning from Rutgers University and a Bachelor of Arts from UMBC. Her professional interests include transportation and land use integration; environmental justice; providing safe, accessible, healthy, and sustainable transportation options for all travelers; and enhancing research and data collection about pedestrian and bicycle travel. Prior to joining BMC, Heather was a transportation planner for Land-of-Sky Regional Council in Asheville, NC and served as treasurer of

the North Carolina Association of Metropolitan Planning Organizations. She returned to her native Baltimore in 2011 and now enjoys a short but scenic daily bike commute around the Inner Harbor.



**Michael Sonnenfeld, Bike Maryland Board Member, [mjsonnenfeld@att.net](mailto:mjsonnenfeld@att.net).**

**Presentation: Bike Maryland's Legislative Agenda**

Michael is an avid cyclist in the rural environs of Northern Baltimore, Carroll and Harford Counties, and believes preservation of agricultural and rural land and open space creates significant benefits for all of Maryland's citizens (and cyclists). He is an attorney and has spent over 25 years working in the residential mortgage and mortgage-backed securities industries, including founding Fieldstone Mortgage Company in 1995 and serving as the first President of Saxon Mortgage Funding Corporation prior to that. He is a cancer survivor and has participated since 2003 in the Pan Mass Challenge, an annual bike-a-thon that is the largest athletic fund raising event in the world and that has raised over \$300 million since 1980 to fund advances in cancer research and treatment at the Dana Farber Cancer Institute in Boston, MA.

Michael is working to strengthen the three foot passing law and is especially passionate about bicycle safety.



**Dave Love, PhD, Project Director at the Johns Hopkins Center for a Livable Future and on the faculty at Johns Hopkins Bloomberg School of Public Health, [davelove1@gmail.com](mailto:davelove1@gmail.com).**

**Presentation: How Close is 3 Feet? One Bicycle Commuter's Video Diary**

Dr. Love is a microbiologist by training and studies the connections between food, farming, health, and the environment. He just completed a study of motor vehicle passing distance of bike commuters. Dave is bike advocate and bike commuter in Baltimore, Maryland.



**Katie Gore, Bike Maryland Bike-MINDED Program Coordinator, ktgoremth@comcast.net. Presentation: Being Bike-MINDED**

Through her work as a Bike Maryland Bike-MINDED Coordinator, Katie performs fun, social and educational bike safety workshops for youth in Baltimore. Additionally, she leads bicycle commuter workshops for adults throughout Maryland. Katie was a Parks and Recreation Leader in the Minneapolis Park system and studied Early Childhood Education at The University of Minnesota and Towson University. She is the Director for the Trails End Mountain Bike Camp for kids ages 12-16. She is co-owner of two Baltimore bicycle shops and is an active mountain and road cyclist. "I have seen a positive change in the acceptance of cycling in Maryland over the past three years and realize it is only the beginning. I know bicycle safety is one of the key components in helping Maryland become a top Bike Friendly State. The earlier we teach our children good riding habits - the earlier we expose them to responsible ways to ride - the greater chance for those lessons to become a life foundation for bicycling as a means of commuting and for recreation." Please contact Katie to schedule a Youth Rodeo, Adult Commuter workshop, volunteer, become a

Bike Ambassador or partner with Bike Maryland.



**Marla Streb, Bike Maryland Bike-MINDED Program Coordinator, marla@bikemd.org. Presentation: Being Bike-MINDED**

Marla Streb is a retired professional cyclist of 16 years, with accolades such as World, U.S. National and X Games Champion. During her racing career, Streb published two books and was also on the board of USA Cycling for three years. Perhaps her favorite aspect of life as a pro was the many visits to schools and communities around the country, opening kids' eyes to the world of cycling. Currently, Marla continues to utilize her skills with youth as a Bike Maryland Bike-MINDED Coordinator. Additionally, Marla is a part time coach for the LUNA Chix Ambassador Program and a PR/Marketing contractor for the LUNA Pro Team. A Baltimore native, Streb earned a Master of Science degree from University of Maryland in 1990. The Fells Point resident is a proud mom of two young girls, Kiki (2) and Nicoya (5), who happily (and safely) travel together by bicycle or foot on over 90% of their downtown trips. Marla's goal is to encourage other Baltimoreans to safely ride, and enjoy

the journey as much as the destination. Please contact Marla to schedule a Youth Rodeo, Adult Commuter workshop, volunteer, become a Bike Ambassador or partner with Bike Maryland.



**Michael E. Jackson, State Director of Bicycle and Pedestrian Access, Maryland Department of Transportation, mjackson3@mdot.state.md.us. Presentation: Director's Update on Maryland Bicycling Initiatives**

Michael Jackson currently holds the position of Director of Bicycle and Pedestrian Access with the Maryland Department of Transportation and is responsible for advising the Department on bicycle and pedestrian transportation policies. Mr. Jackson has worked on bicycle and pedestrian matters his entire professional career of over 30 years. Prior to joining MDOT in 2000 he served as the State Bicycle Coordinator for the Minnesota Department of Transportation, and held bicycle coordinator positions with Contra Costa County, California, the City of San Diego and Washington, DC.

**Peter C. Moe, Section Chief, Program Advisory Section, Maryland State Highway Administration, pmoe@sha.state.md.us.**

**Presentation: Maryland's Bicycle Awareness Campaign**  
Biography to be posted soon.



**Delegate Jon S. Cardin, District 11, Baltimore County**  
**Sponsor of numerous pro-bicycle bills. Successfully worked to pass the 3 foot law in 2010. Member of House of Delegates since January 8, 2003.**  
**Member of the House Ways & Means Committee (and chair of the Election Law Subcommittee).**  
**Chair, Maryland Bicycle and Pedestrian Caucus, 2005.**  
Please visit: <http://www.msa.md.gov/msa/mdmanual/06hse/html/msa13984.html> to view Delegate Cardin's impressive biography.



**Delegate James E. Malone Jr., District 12A Baltimore County and Howard County**  
**Leader in Distracted Driving Legislation**  
**Member of House of Delegates since January 11, 1995.**  
**Vice-Chair, Environmental Matters Committee since 2003.**  
**Member Maryland Bicycle and Pedestrian Caucus since 2003.**  
**Member of numerous Committees.**  
Please visit: <http://www.msa.md.gov/msa/mdmanual/06hse/html/msa12263.html> to view Delegate Malone's impressive biography.



**Delegate Luiz R. S. Simmons, District 17, Montgomery County**  
**Successfully worked to pass the criminal negligence - manslaughter by motor vehicle law. Member of House of Delegates, January 10, 1979 to January 12, 1983 and since January 8, 2003.**  
**Member, Judiciary Committee and many other Committees.**  
Please visit: <http://www.msa.md.gov/msa/mdmanual/06hse/html/msa13381.html> to view Delegate Simmon's impressive biography.



**Bill Nesper, Director, Bicycle Friendly America Program, League of American Bicyclists, [bill@bikeleague.org](mailto:bill@bikeleague.org). Presentation: Bicycle Friendly Maryland**

Bill Nesper oversees the League's Bicycle Friendly America program, which includes the Bicycle Friendly Community, Bicycle Friendly State and Bicycle Friendly Business recognition programs. Nesper first joined the League as a Membership Assistant in 2002 and moved in 2005 to manage the League education programs and Bicycle Friendly Community Program. Prior to joining the League, he was a touring musician and Artist Manager for seven years. He

holds a BA in History from the University of Florida and is completing an MA at George Mason University. Nesper rides his bike nine miles to work and is a member of the Association of Pedestrian and Bicycle Professionals, and the Washington Area Bicyclist Association.



**Rebecca Dougherty Goldman, Research & Performance Metrics Manager, Office of Tourism Development, Maryland Department of Business & Economic Development, [rgoldman@visitmaryland.org](mailto:rgoldman@visitmaryland.org).**

**Presentation: Cycle Maryland Survey – Who, What, Why, Where, and How**

Rebecca has managed the research program for the Maryland Office of Tourism since 2007. A favorite part of her job at OTD includes participating on multidisciplinary projects with a range of collaborators, including but not limited to the Maryland Departments of Transportation, Natural Resources, and Planning; county and local partners; universities; and marketing and advertising firms. Rebecca has a master's degree in urban affairs and public policy from the University of Delaware, a bachelor's degree in mass communications from Towson University, and a passion for developing good research that guides better decision making and improved programming within the public sector.



**Nate Evans, Bicycle & Pedestrian Planner, Baltimore Department of Transportation, [NateEvans@baltimorecity.gov](mailto:NateEvans@baltimorecity.gov).**

**Presentation: Bike Advocacy - An Inside Job**

Nate Evans has been the bicycle & pedestrian planner with the Baltimore Department of Transportation for four years. In that time, Nate has overseen the planning, engineering and construction of nearly 50 miles of bike facilities including the city's first contraflow bike lanes, on-street bike parking, shared bike & buses lanes and first bike box. Nate has also helped shift city policy in a pro-bike direction with a Complete Streets resolution, bike friendly storm grates on all construction projects and establishing a \$75 fine for parking in bike lanes. He graduated from Frostburg State University with a degree in Urban Planning and spent 10 years as a civil engineer before working with the city. Nate lives in Perry Hall with his wife Heather and three awesome kids where he is active in his community and rides trails whenever possible.



**Kate R. Sylvester, Office of Planning and Capital Programming, Maryland Department of Transportation, [ksylvester@mdot.state.md.us](mailto:ksylvester@mdot.state.md.us).**

**Presentation: Maryland's Bikeways Program**

Kate Sylvester is a Community Planner at the Maryland Department of Transportation, where she oversees the Maryland Bikeways Program and works on a range of transportation and land use issues, including trails, complete streets, transit oriented development, and sustainable communities. She holds a Master of City Planning from the Massachusetts Institute of Technology and a Bachelor of Science from Northwestern University. Prior to joining MDOT, Kate worked as a transportation planner for the Volpe Center of USDOT in Cambridge, Massachusetts and a

transportation consultant in Baltimore.

**William Atkinson, Maryland Department of Planning, Western Maryland Regional Office, Regional Planner, [batkinson@mdp.state.md.us](mailto:batkinson@mdp.state.md.us). Presentation: Trails and Economic Development**

Bill has worked as a Regional Planner for the Maryland Department of Planning since 1989. He supervises the regional office and provides technical assistance, coordination and liaison activities with elected officials and local jurisdictions within Western MD on State Smart Growth issues and Policies. In June 2009, he was assigned the duties of the Coordinator of the Trail Town Program for Allegany County Maryland. The Trail Town Program is an economic development program along the Great Allegheny Passage working to revitalize trailside communities and reap the economic benefits of trail-based tourism and recreation as part of a larger, coordinated approach to regional economic development. Bill is a Graduate of Frostburg State University, July 1984 with a Bachelor of Science in Business Administration Management Concentration.